



Wireless Long Range Camera

For MaxRanger4K™ Solar Wireless Security System

Instruction Manual

1 Introduction

Congratulations on the purchase of your Swann Wireless Long Range Camera.

- 4K Ultra HD video from Sony Starvis sensors ensures premium quality video day or night
- Integrated solar panel to keep the rechargeable lithium ion batteries charged
- Spotlights, Siren & 2-Way Audio allows you to talk to visitors & warn intruders to help prevent crime
- Works in rain & snow all year round, & offline

Important instructions

1. Apple USB-C power adapters are not compatible. Use the provided USB-C cable and a standard USB 5V 2A power adapter to charge.
2. Make sure the camera is fixed correctly to the mounting bracket and stable if fastened in place.

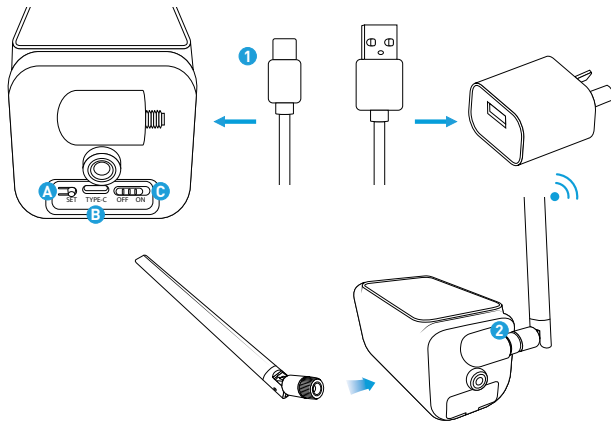
3. Do not operate if wires and terminals are exposed.

Important Note: All jurisdictions have specific laws and regulations relating to the use of cameras. Before using any camera for any purpose, it is the buyer's responsibility to be aware of all applicable laws and regulations that limit the use of cameras.

About this Manual: The content in this manual is for information purposes only and is subject to change without notice. While every effort is made to ensure that this manual is accurate at the time of printing.

For instructions on how to configure your camera for motion detection, changing image settings, and other functions available, please consult the manual for your NVR. Go to support.swann.com, search for your model, then download.

2 Charging the Battery



Pull the rubber cover gently to access:

- A.** Press and hold the pair button to pair to your NVR.
- B.** USB-C connection to charge the battery.
- C.** Turn the camera on or off.

1. Charge the battery for three to four hours using the USB-C cable provided (USB power adapter not included). When mounted, the camera's solar panel will charge the battery.

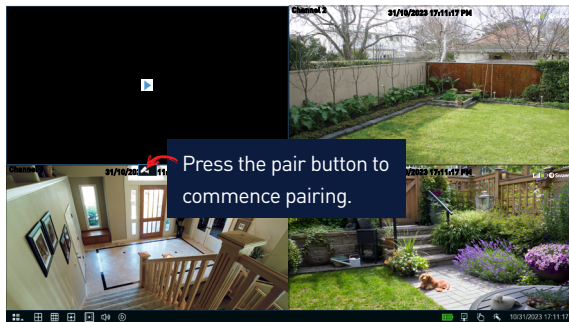
2. Connect the supplied antenna to the camera's antenna connection. Turn the antenna base clockwise to connect (make sure it's firm, but don't overtighten). Leave the antenna in a vertical position for best reception.

When finished, turn the camera on. The camera will automatically pair with your NVR. Remove the plastic film from the camera's lens.



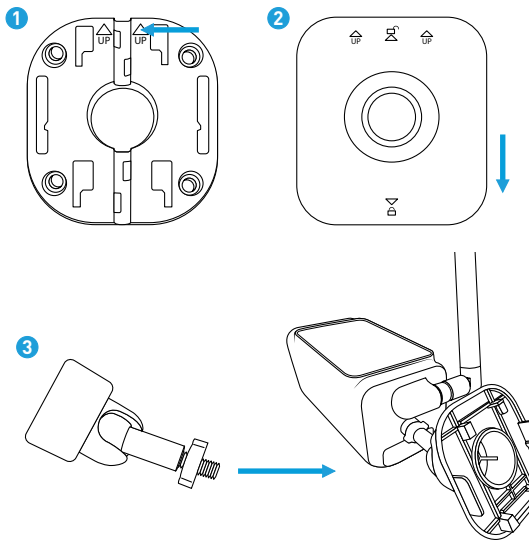
If the camera hasn't paired, follow the instructions in step 3.

3 Pairing the Camera



1. In Live View mode, click a channel to pair the camera to.
2. A pair button appears (a blue pair button may also appear in the top-right hand corner of each channel). Press this button to commence pairing. A message will appear on-screen.
3. Press and hold the pair button on the camera until you see red and blue LEDs flashing, then release. The camera is now in pairing mode.
4. After a short moment the camera will be paired, and you will see the camera's image on-screen. If the camera fails to pair, repeat the above instructions and try again.

4 Mounting the Camera



Securely attach the camera to a level surface using the included screws and wall plugs. Ensure that the surface is sturdy enough.

1. Place the mounting plate in the desired location. Then, fasten the mounting plate in position using the suitable screws for the surface you are attaching it to. Pay attention to the UP marking while positioning the mounting plate.

2. Unscrew the mounting bracket from the mounting base anti-clockwise. Place the mounting base onto the mounting plate and push down to lock it in place.

3. Secure the mounting bracket back onto the mounting base clockwise, then screw the mounting bracket to the rear of the camera. Use the tiny bolt to secure. Adjust the viewing angle, then tighten to secure in place.

5 Camera Location Tips

1. Take into consideration what you want to monitor and where you'll get the best view of it.
2. The amount of energy the camera's solar panel can produce depends on several factors: average sun exposure, weather conditions, tilt angle, and dust or debris.
3. Choose a location for your solar panel that gets plenty of sunlight - try to avoid spots that are in the shade for a significant portion of the day.
4. Mount your camera facing true south (in the northern hemisphere) or true north (in the southern hemisphere) and tilt it to the appropriate angle for your latitude.
5. Wipe the panel every few months to remove dust or debris that might affect the solar energy-harvesting efficiency. Don't use abrasive materials.
6. Place your camera as close to the area of interest as practicable. The best position is from about 13ft/4m above looking slightly down, keeping in mind the details you are looking for.
7. Make sure your camera has minimal sky in it as the light in daylight can make the foreground of the image darker.
8. Think about the most likely way a potential offender may approach your home, use your camera to give you the best coverage of these areas.
9. The camera's casing is resistant to different weather conditions and tampering. It would take an overwhelming event to damage the housing.
10. Even though the camera is weather and water-resistant, prolonged exposure to adverse weather conditions such as excessive moisture, may eventually damage the internal components of the camera and adversely affect its performance.

6 Camera Location Tips



Position your camera so that it faces the entrance of your property. Focus on entries in particular the front door and garage to reduce unnecessary triggers.



Avoid aiming your camera directly at swaying trees, as this can cause it to be triggered too frequently.

7 Camera Location Tips



You'll generally get better detection results by pointing the camera downwards at an angle where people will be moving across the coverage area.



To minimize false triggers, avoid angling your camera to overlook busy roads, high-traffic areas, shrubs and neighbouring properties.

Helpdesk & Resources

Visit Swann Support Center at support.swann.com. You can register your product for dedicated customer support, download guides, find answers to commonly asked questions, and more.



Support Community



Customer Support



Product Manuals



Frequently Asked Questions